

Operator Terminals CP400

Performance and Comfort,
your Best Choice for Operator Terminals



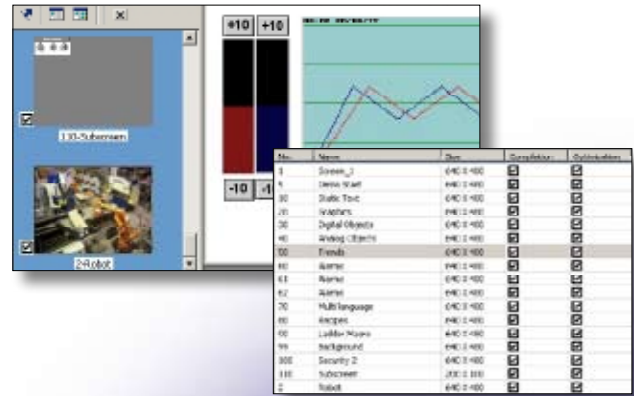
Performance and Comfort, your Best Choice for

Performance

Quick and easy project creation and management

Quickly view and easily manage your project components using the **screen manager** (detailed list or screen miniatures).

Simplify the creation, modification, sorting and identification of your project data via the **cross-references** function.

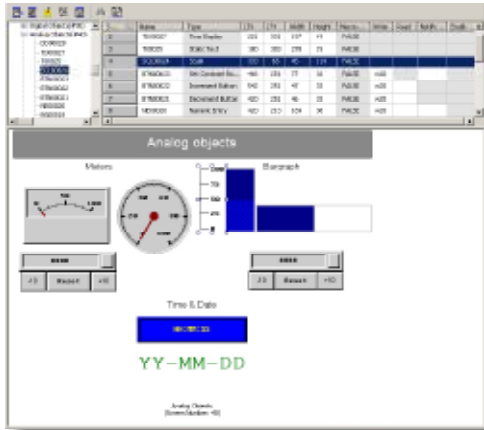


Easy testing and use

Test your projects, screens and alarms as well as your communication and controller functions quickly via **on- and off-line simulation**.

Change language quickly and easily using the **multi-language support** function.

Secured data and operations

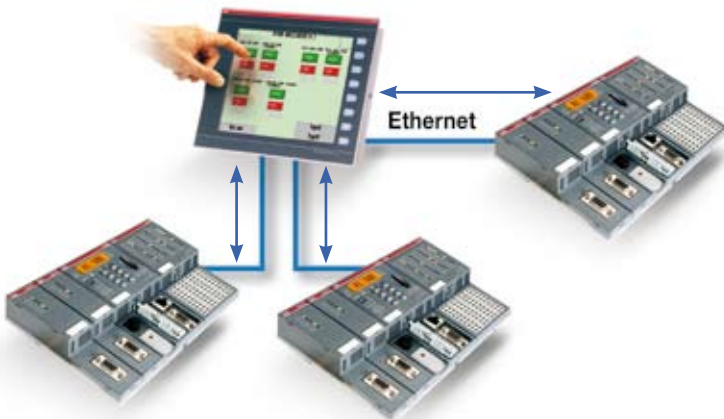


Protect your files and machine configurations using global and object-specific passwords (9 protection levels) to prevent downloading of the application.

Simplified adaptability and connectivity

Connect your HMIs to the various automation equipment:

- via the various **possible protocols** for ABB AC31, series 40&50, series 90, AC500 PLCs and more than 100 leading PLCs on the market, where the display acts as gateway. The multi protocol also allows data to be exchanged between the various controllers.
- via **multi-channel communication** (Connecting a controller to each available port via different protocols, transferring values between drivers via macros, using the values of various controllers in the calculations).
- via the **multiple connection media** (RS232, RS485, RS422 or Ethernet...) increasing connection capacities.



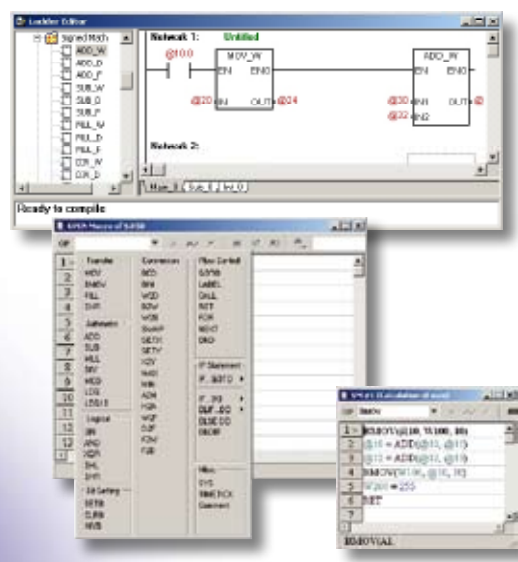
Operator Terminals

Comfort

Simplified creation

Simplify the creation of your projects using:

- the **Macro** and **Ladder** functions, providing you with ready-to-use modules such as arithmetic functions
- quick and easy retrieval of your PLC's variables by **variable import**.



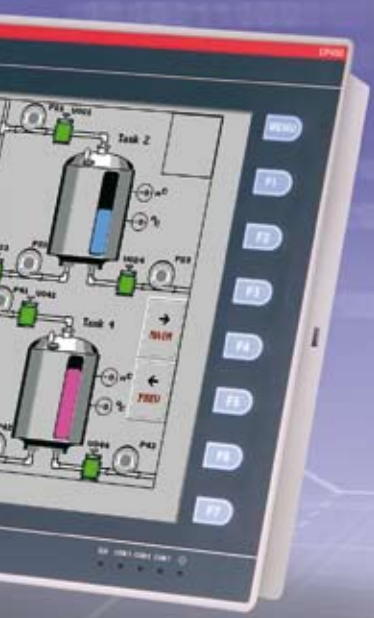
Easy template choice

Satisfy your requirements by choosing the HMI which is most adapted to your needs in terms of dimensions, colours, functions and connection.

Controller/PLC

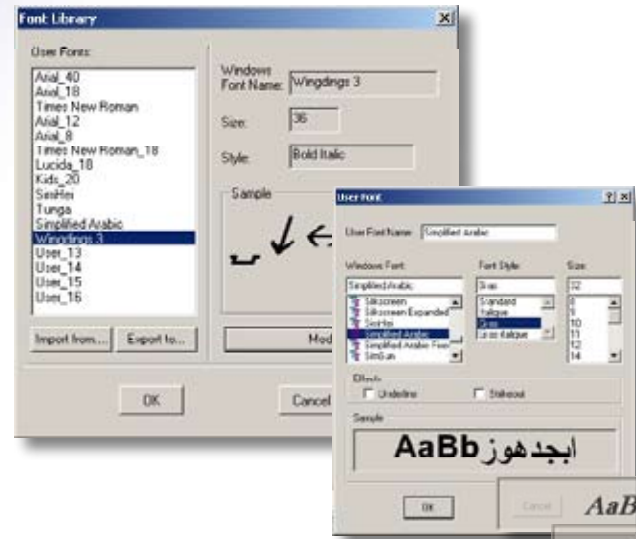
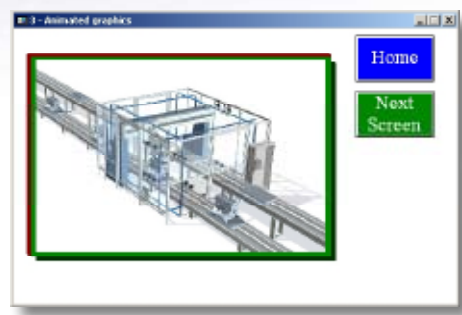
- AB DH-485
- AB SLC 5/03, 5/04
- ABB AC31 Series 40,50
- ABB AC31 Series 90
- ABB AC500 PM571
- ABB AC500 PM58X
- ABB AC500 PM59X
- ASCII Device
- Computer (as master)
- Computer (as master) V2
- Computer (as slave)
- Danfloss VLT Series Inverter
- DELTA DVP-ES/SS/EP/EH PLC
- Delta VFD-8 Inverter
- Dupline DKG2
- Elmo SimpleIQ
- Facon FB Series(RS232/RS485)
- Facon FB Series(RS232-RTS)
- Hitachi EC Series
- Hitachi H/EH1 (RS-485)
- Hitachi H/EH1 Series
- Iddec MicroSmart
- Jetter-process-PLC
- Koyo Direct DL Series
- Matsushita FP Series
- Mitsubishi A1S/A2S CPU Port
- Mitsubishi A3N/A1SH CPU Port
- Mitsubishi An/AU Link
- Mitsubishi An/N/S Link
- Mitsubishi FX Series
- Mitsubishi FX2N
- Mitsubishi FX2N-485ADP
- Mitsubishi FX3UC
- Mitsubishi FX3UC-485ADP
- Mitsubishi MELSEC-Q(CPU)
- Mitsubishi MELSEC-Q00(CPU)
- Mitsubishi MELSEC-QnA(LINK)
- ModBus Master
- ModBus RTU Slave (Beijer Addressing)
- ModBus Slave
- ModBus(ASCII) Master
- ModBus(ASCII) Master - V2
- ModBus(ASCII) Slave
- Modicon 984 (RTU; Master)
- Modicon 984 (RTU; Slave)
- Null
- QEMAX NX7 Series
- Omnron C Series
- SAIA PCD1/PCD3
- Samco-e Inverter
- Schneider-Electric Twido
- Shinko DCL Series
- SIDE MIDA 20/200
- Simatic S7-200 (via PPI; 1-to-1)
- Simatic S7-300 (via MPI Port)
- Simatic S7-300 (via PC adapter)
- Taian TP02 Series
- Texmate 320
- Vigor M/VB Series
- VIPA Sys200V MPI
- Yokogawa FA-M3 Series

La liste des drivers est mise à jour continuellement



Enhanced visual comfort

Embellish your screens by using available or imported **fonts** and by importing **animated Gif images**.








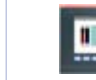







微软中文软件

Description	Type	Order code
Programming software	CP400Soft	1SBS 260 284 R1001
RS232 programming cable	TK401	1SBN 260 216 R1001
Programming cable	TK402	1SBN 260 217 R1001
RS232, AC31 communication cable (40&50)	TK403	1SBN 260 218 R1001
RS232, AC31 communication cable series 90	TK404	1SBN 260 220 R1001
RS232, AC500 communication cable	TK405	1SBN 260 221 R1001

Type	Order code
CP410M	1SBP 260 181 R1001
CP415M	1SBP 260 191 R1001
CP420B	1SBP 260 182 R1001
CP430B	1SBP 260 183 R1001
CP430BP	1SBP 260 192 R1001
CP430BP-ETH	1SBP 260 194 R1001

Type	Order code
CP430T	1SBP 260 195 R1001
CP430T-ETH	1SBP 260 196 R1001
CP435T	1SBP 260 193 R1001
CP435T-ETH	1SBP 260 197 R1001
CP440C-ETH	1SBP 260 187 R1001
CP450T	1SBP 260 188 R1001
CP450T-ETH	1SBP 260 189 R1001

													
	CP410M	CP415M	CP420B	CP430B	CP430BP	CP430BP-ETH	CP430T	CP430T-ETH	CP435T	CP435T-ETH	CP440C-ETH	CP450T	CP450T-ETH
Display type	LCD-STN 16 grey	Touch Mono FSTN 16 grey	Touch 16 blue STN	Touch 16 blue, STN			Touch 64K colors, TFT		Touch 64K colors, TFT		Touch 64K colors, STN	Touch 64K colors, TFT	
Display size	3"	3.5"	4.7"	5.7"			5.7"		7"		7.5"	10.4"	
Resolution (Pixels)	160 x 80	240 x 240	320 x 240	320 x 240			320 x 240		800 x 480		640 x 480	640 x 480	
Brightness (cd/m2)	36	90	110	110			300		250		350	350	
Contrast adjustment	Via VR (variable resistance)	Via touch panel	Via touch panel	Via touch panel			Via touch panel		Via touch panel		Via touch panel	Via touch panel	
Back-light type	LED	LED	CCFL	CCFL			CCFL		CCFL		CCFL	CCFL	
Back-light life	75 000 hours	40 000 hours	50 000 hours	50 000 hours			60 000 hours		30 000 hours		45 000 hours	50 000 hours	
Touch screen (number of times)	-	> 1 million	> 1 million	> 1 million			> 1 million		> 1 million		> 1 million	> 1 million	
Function keys / other keys	16 keys (10 of which may be function keys)	-	-	5 keys + 1 key menu			5 keys + 1 key menu		6 keys + 1 key menu		6 keys + 1 key menu	7 keys + 1 key menu	
Application flash prom	4 MB	4 MB	4 MB	4 MB			4 MB		8 MB		8 MB	8 MB	
RTC (rechargeable lithium battery)	•	•	•	•	•	•	•	•	•	•	•	•	•
Ethernet	-	-	-	-	-	•	-	•	-	•	•	-	•
Alarm management	-	•	•	•	•	•	•	•	•	•	•	•	•
Recipe management	-	-	-	-	•	•	•	•	•	•	•	•	•
Data/Recipe	-	-	-	-	512 KB		512 KB		512 KB		512 KB	512 KB	
Trends	-	•	•	•	•	•	•	•	•	•	•	•	•
Data storage (CF card)	-	-	-	-	•	•	•	•	•	•	•	•	•
Communication interface	1	1	2	2			2		3		3	3	
USB 2.0	-	-	-	-	1 host + 1 device		1 host + 1 device		2 hosts + 1 device		2 hosts + 1 device	2 hosts + 1 device	
Printer port	-	-	-	-	USB			USB		USB		USB	
Consumption	< 330 mA	< 330 mA	< 500 mA	< 840 mA			< 840 mA		< 1 A		< 1 A	< 1.25 A	
Dimensions mm L x H x D (external)	173 x 106 x 52	96 x 96 x 40.6	170 x 103 x 45	195 x 145 x 60			195 x 145 x 60		231 x 176 x 47		231 x 176 x 47	297 x 222 x 52	
Weight (kg)	0.65	0.23	0.47	0.81			0.81		1.20		1.20	1.90	

For the entire range:

- 32 bit RISC CPU
- Graphics and text
- Macro and Ladder
- On-line and off-line simulation
- Real time clock
- Password protection
- 4 MB flash memory
- 24 V DC ± 15% supply voltage
- Ambient temperature: 0 to 50 °C
- IP65 class protection
- Conform to ROHS



ABB France
Automation Products Division
Export Department
10, rue Ampère Z.I. - B.P. 114
F-69685 Chassieu cedex / France
Tel.: +33 (0)4 7222 1722
Fax: +33 (0)4 7222 1935

ABB STOTZ-KONTAKT GmbH
P.O. Box 101680
D-69006 Heidelberg / Germany
Tel.: +49 (0) 6221 701-00
Fax: +49 (0) 6221 701-1115